

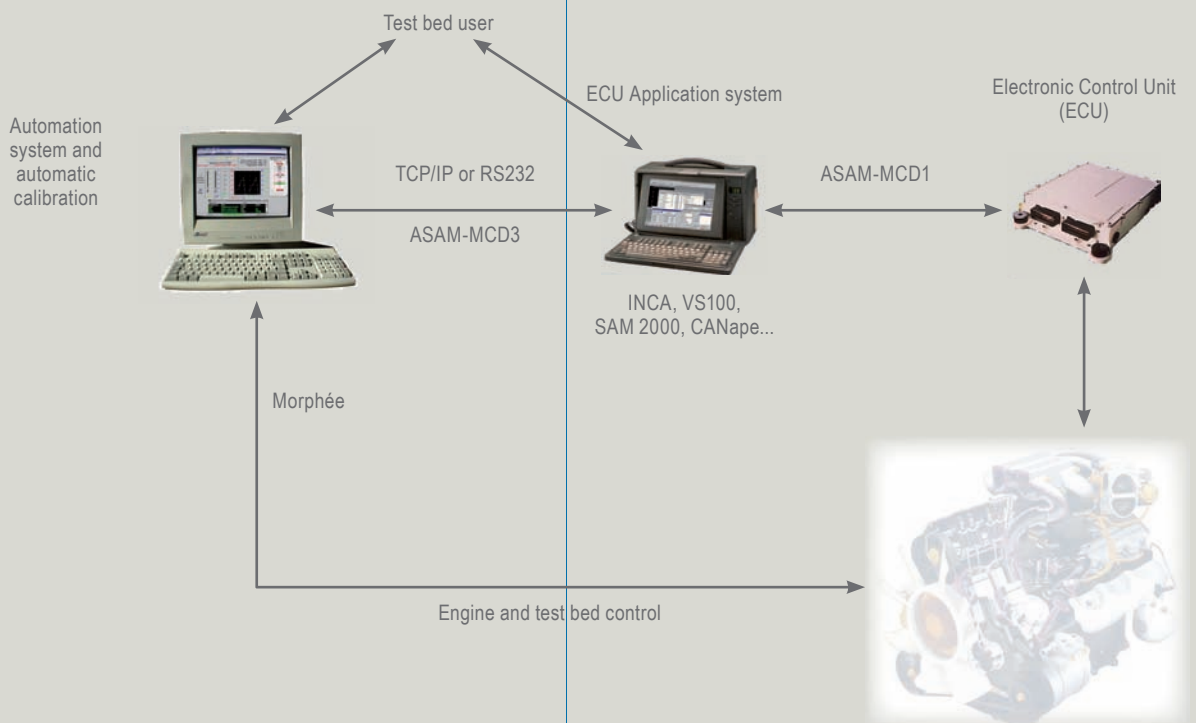
### ASAM MCD3 Interface

4 ECU and 4 A2L files

Online change of binary engine map files and binary ECU file

The MCDPackage simplifies and accelerates writing of ECU tests for Morphée. It enables the matching of ECU and Morphée test channels

- ✓ Fast creation of the MCD3 component
- ✓ Attractive graphical user interface
- ✓ Distribution of test bed ECU components via a server
- ✓ Management of 255-character channel identifiers from version 3.1.0 and above
- ✓ Several binary files for each ECU



## INTRODUCTION

The MCD3 protocol ensures communication between the calibration tool, connected to the ECU and the test bed control system.

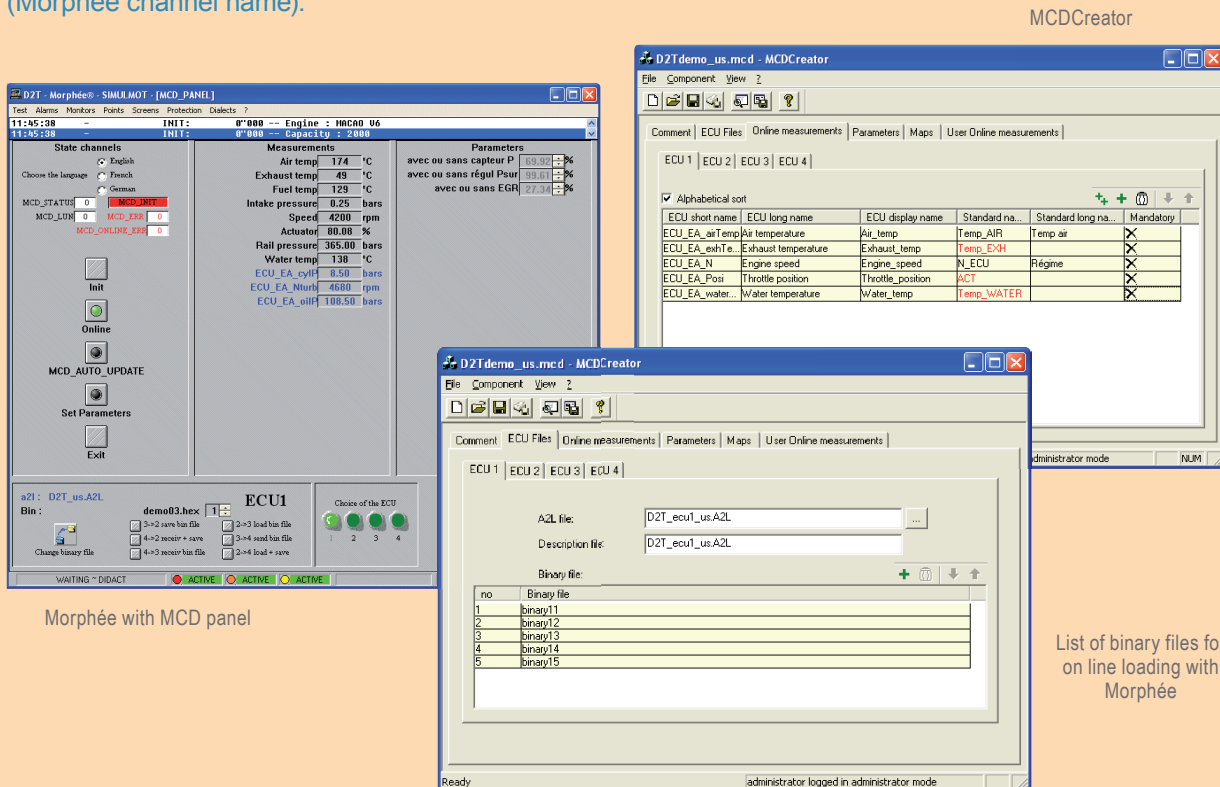
Increasingly sophisticated and increasingly complex, the new engine computers handle thousands of bytes. Furthermore, the data frequently changes from one ECU to another, or from one version to another (firmware).

## MCDCREATOR

MCDCreator makes it possible to select the ECU channels and generate the MCD component.

MCDCreator generates a component which includes all Morphée ECU management parameters: quantities, methods and instruments.

In order to simplify the use of the tool, the ECU data are listed with the short name, the long name, the display name, the standard name (Morphée channel identification) and the standard long name (Morphée channel name).



List of binary files for on line loading with Morphée

## MCD3 COMPONENT

The MCD3 component fits in the Morphée component tree.

If ECU data are modified, one needs only to regenerate the component with MCDCreator. Automatically the component data are updated with no change in the Morphée test. The test can go ahead with the new component to communicate with the ECU.

### Distribution of ECU components by a server

Whilst working on the test bed, it is possible to:

- Create a new MCD3 configuration locally,
- Create a new configuration from a model stored on a network storage device,
- Save a configuration as a model on the network

All D2T products benefit from a one-year back-to-factory parts and workmanship warranty. Technical specifications may be modified without prior notice.