



**Excellent Cost : Benefit ratio**

**Very user-friendly**

**Unlimited choice of input parameters**

**HEADER is a D2T software schedule that works in the MORPHEE environment. It works in Windows™ NT, 2000 and XP and is Y2K compliant as of version 6.4.0**

The HEADER test editor enables the following functions:

- ✓ **Input of text parameters and digital values for the HEADER test**
- ✓ **Reference test modification**
- ✓ **Starting of MORPHEE with a selected test**
- ✓ **Start of Excel™ and/or VENUS with a MORPHEE points file**



Test Descriptor - A0001.CAR

File Configuration Page Information

Test : SIMULATOR Engine Files : A0001

Test parameters Engine parameters

**Test parameters**

Number : . . . . .	99-0527-A0001	Test purpose : . . . . .	Test
Test operator : . . . . .	Bill	Bench : . . . . .	2
Hygrometry : [%] . . . . .	51.0	Atmospheric pressure : . . . . .	996
Fuel : . . . . .	GAS-OIL	Fuel density : . . . . .	830
Fuel cons time : . . . . .	6	Notes : . . . . .	test
Oil type : . . . . .	15W50	Emission Measurement : . . . . .	Yes
Combustion measurement	Yes		

Help

Edit Ref Test

<< Previous page    Next page >>    Current page : 1

Start test    Continue

Test : C:\BENCH\TESTS\Simulator\SIMULMOT.ess    Cancel

## FUNCTION

This software displays a window with 1 to 16 input pages. Each page can contain up to 24 or 34 input fields. The entries in these fields can have different text (alpha-numeric) or values (numeric).

Some field values can be sent to MORPHEE channels. In these cases they may only contain numeric values.

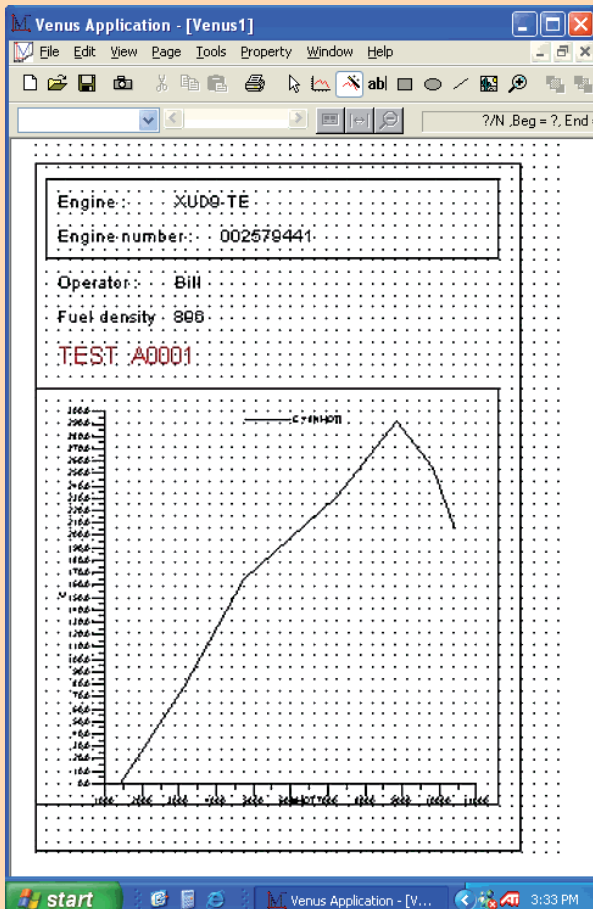
The user chooses a test in the «Test» list and a header in the «car file» list. If no file corresponds to the users requirement the user must enter data in the field and then begin the cycle.

The software then performs the following operations

- Copies the selected MORPHEE test in the specified directory
- Creates the PARAM.CYC cycle for the initialisation of the MORPHEE channels with the values from the HEADER
- Inserts this cycle at the beginning of the process
- Header data backup
- MORPHEE test start

If the MORPHEE test cycle finishes normally, the CMD1, CMD2, CMDn controls are executed. These controls enable copying of files and the start of an Excel™ macro or a VENUS plot with the selected MORPHEE data files.

## VENUS TEST REPORT



If the test has not completed normally (immediate stop, stop during cycle or security stop), the buttons «Cycle restart» and «Continue» appear in the main window. After stopping the MORPHEE test, the results directory is automatically created with a date and time reference. The points file is copied into the directory.

The «Cycle restart» button allows the User to restart the MORPHEE test. The «Continue» button allows execution of the report function and completion of the test. At this point the test cannot be restarted.