

CENTRALIZED TEST DATABASE MANAGER SOFTWARE

A user-friendly integrated solution for Morphée test beds

ASAM-ODS compliant

Centralized storage for parameters and tests results

Secure access to all the data

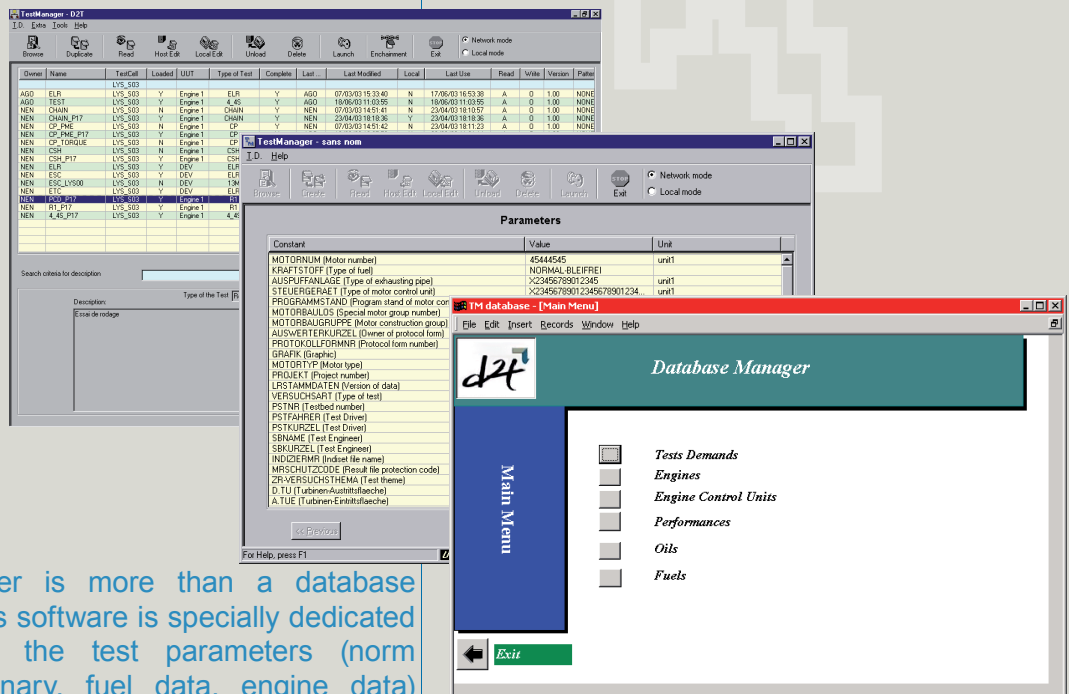
Test sequence handling with the same test cell

Testmanager is a D2T solution that enables the user to supervise projects including engine, powertrain, vehicle, fuel, users, test procedures and results for all test beds

Testmanager provides an answer to customers's needs for:

- ✓ centralized administration
- ✓ test parameters database
- ✓ data browser, multi-criteria search
- ✓ user access right and database administration
- ✓ replication of the test descriptions from host database to local database

Testmanager is easily interfaced with most popular database management systems like Oracle and SQL Server.



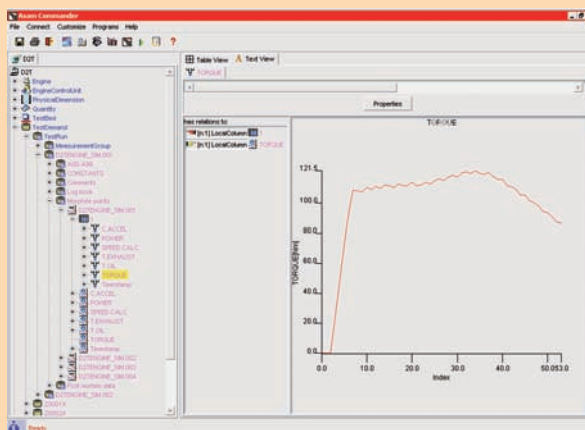
Testmanager is more than a database manager. This software is specially dedicated to preparing the test parameters (norm names dictionary, fuel data, engine data) for automation systems like Morphée, and a valuable help in analysing the results thanks to a structured centralized database.

Testmanager is a database manager compliant with ASAM-ODS standard. Using Testmanager, test bed operators and administrators can design and use their own templates for automotive test beds.

GENERAL PRESENTATION

Testmanager is a centralized test database management software that provides management, archiving, and retrieval of test information, moreover with this software you can setup and launch test descriptions to Morphée (automation system) for the test cells.

A typical test run archive may include comments, logbook, measurements data, post-mortem data, configuration files. Plus in the same database, you can find the engine, powertrain or vehicle parameters, ECU list, test bed list, quantity list, test descriptions, test carried out, physical dimension, units, users list and user groups. Testmanager allows 5 group levels.



DATABASE MANAGEMENT

The channels, constants, descriptive data (like test cell, test type, engine and engine type...) and user information are always kept in the database.

The test results are first saved in a file structure on the test bed computer. From here, the data are transferred to the host, where they can be stored either in an ASAM-ODS-compliant format via an ODS server, or as files on a file server, then the database contains only the reference to the location of the results.

Obviously, for every type of measurement it is a question of customer choice.

The D2T data model follows the ASAM-ODS guidelines, but allows storage of a lot more additional information. The structure of the result storage is more flexible as one can store the results in the form of projects, each consisting of different campaigns, containing the test series with the tests.

START AND RESUME A TEST

The user can automatically start a test from within the Testmanager interface, or a sequence of several tests with different parameters.

It is the only system offering the possibility to launch a whole sequence of tests, and let them run unattended e.g. overnight.

A very useful feature of Testmanager is the validation of test descriptions. This allows a user working on a test description to decide with each save, whether to declare it as ready-to-use on a test bed, or whether to deny access until modifications are finished.

PARAMETERS REPLICATION AND RESULTS STORAGE

Testmanager can work either in local or network mode. Switching between the 2 modes is done manually.

Even if there is a disturbance on the network, Testmanager retains all data and parameters required for starting a test locally. The test results are transferred as soon as the network becomes available.

When the network is available, the transfer of the test results onto the server can be triggered either by the event, on a cycle basis or on request. The replication method – total or incremental storage – can be customized for both tests and measurements, and depends on the type of measurement, e.g. steady points, recorders...

D2T also provides a tool to export test results in ATF (ASAM Transport Format).