

All types of model: aircraft, profiles, cylinders, etc.

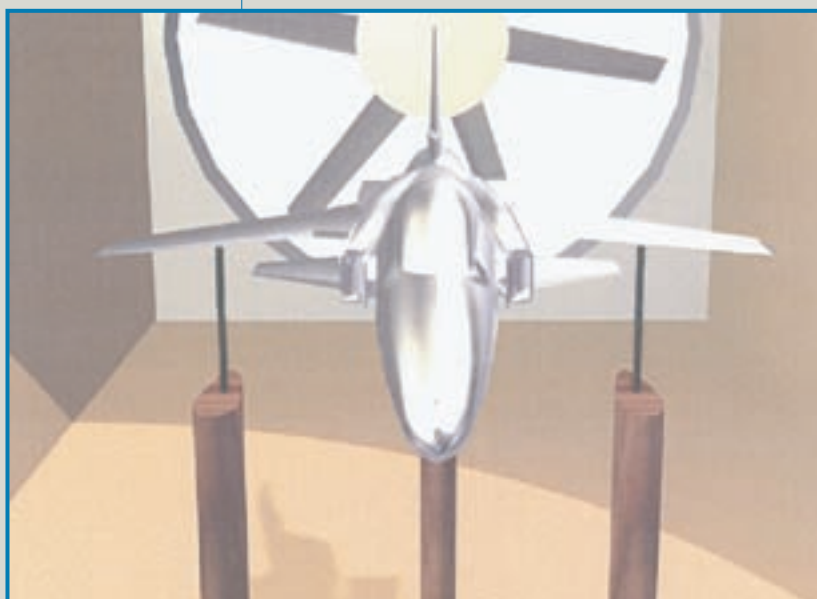
Models sized and mounting to suit test-section characteristics

All types of material

WIDE RANGE OF EQUIPMENT FOR USE IN WIND TUNNELS

D2T manufactures a wide range of equipment to suit test sections in all types of wind tunnels, including:

- Educational wind tunnels
- Research and development
- Industrial wind tunnels



WIND TUNNEL TEST MODELS

DYNAMOMETER-MOUNTED AIRCRAFT MODELS

- All types of aircraft models may be supplied subject to permission from the manufacturer, including gliders and powered models of both civil and military aircraft.
- Models may be made from wood, plastic or metal depending on the application.
- Models are fitted with mounting points for triple mast, single mast and sting dynamometers.
- Models may be fitted with adjustable surfaces (ailerons, flaps, tail section, etc.).



WING MODELS WITH PRESSURE SENSORS

- All types of profile, including NACA.
- Models may be fitted with pressure sensors on both active and passive surfaces.
- Air flow visualization system.
- Profiles may be supplied with adjustable surfaces and high lift devices.



MINIMUM BODY MEASUREMENT OF AIRSCREW TRACTION AND TORQUE

- Variable speed triple bladed airscrew on a motorized shaft.
- Airscrew mounting attached to a vertical mast connected to a dynamometer in order to measure airscrew traction.
- Airscrew mounting, motor, torque meter and mast enclosed in removable aerodynamic fairing.
- In-line torque meter.



MEASUREMENT OF BOUNDARY LAYER CONDITIONS AT A PLANE SURFACE

- Plane surface manufactured from wood or lightweight alloy with an elliptical leading edge and a bevelled trailing edge.

